



Character & Citizenship Education

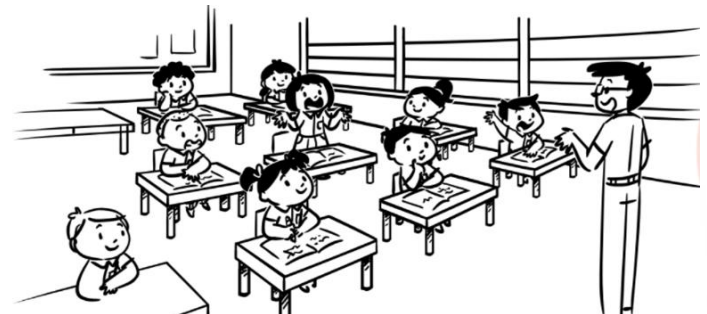
**P4 Curriculum Briefing
25 February 2022**



Character and Citizenship Education (CCE)

Character and Citizenship Education (CCE) is at the heart of education in Singapore. Through CCE 2021, students are provided with **school-wide educational experiences** for their **character, social-emotional and civic development**.

Students learn values, **social-emotional competencies**, and develop citizenship dispositions and a sense of purpose that enable them to grow holistically, leading to positive life outcomes.



Character and Citizenship Education (CCE)



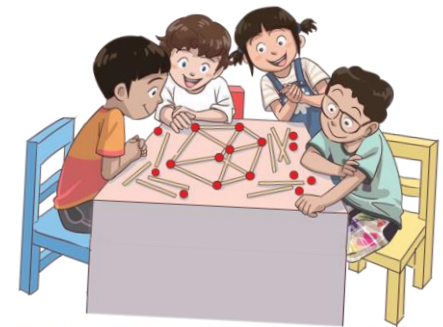
CCE 2021 is underpinned by the three big ideas of **Identity**, **Relationships** and **Choices** and aims to develop in students:



Enactment of CCE

There are several learning platforms where CCE is enacted with intentionality. These include **CCE Lessons during curriculum time**, key Student Development Experiences (SDEs) beyond the classroom, school-based initiatives, subject lessons, and learning opportunities beyond school.

Student Development Experiences (SDEs) are programmes and activities that contribute towards the **holistic development** of our students in the physical, aesthetic, intellectual, moral, and social domains.



CCE Curriculum Content

The CCE curriculum content is based on the three big ideas of **Identity, Relationships, and Choices**, and comprises the teaching and learning of core values and social-emotional competencies with a focus on developing a sense of purpose in our students.

The curriculum content covers the following:

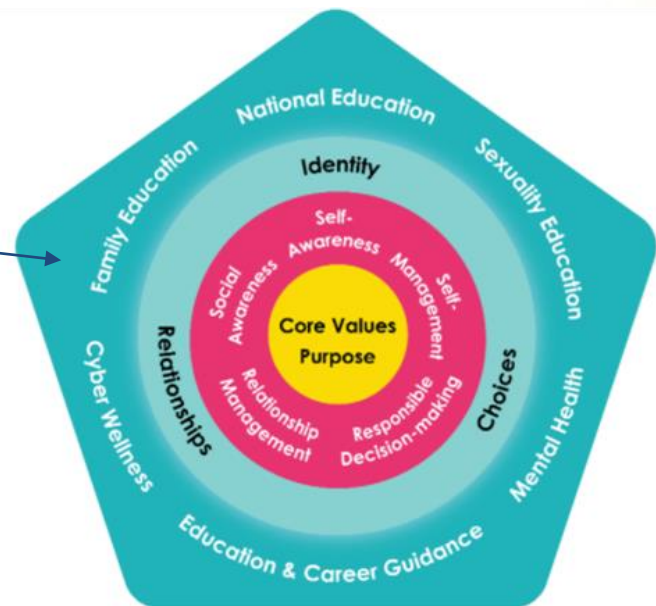


Figure 3: CCE Curriculum Content



Key Features of revised 2021 CCE



Key Feature

#1

Strengthened focus on the FUNDAMENTALS

Self Awareness . Self Management . Social Awareness .
Relationship Management . Responsible Decision Making



Helping students to understand how their emotions, thoughts and behaviour are linked

Building Executive Function



Topics related to citizenship and learning about culturally diverse society to be taught in a multicultural setting.

Deepened learning of MORAL VALUES

Emphasis on values and Social-Emotional competencies such as respectful communication, showing care and appreciation, being resilient in the face of change and challenges, making responsible decisions and doing what is right in CCE (MTL)



好品德 好公民

Rakyat Budiman

பண்புள்ள குடிமக்கள்

Character and Citizenship

Education

**For students exempted from MTL*

- Culture-specific stories, songs, idioms etc
- Greater alignment with MTL

Intentional focus on CCE CONTENT AREAS



Mental Health



Cyber Wellness



Family Education



Sexuality Education



Education & Career Guidance



National Education

Delivered through CCE (FTGP), especially in the Upper Primary levels (P4 – P6)

Key Feature

#4

COHERENCE across CCE Lessons

CCE (FTGP)

CCE (MTL)

Common Set of Learning Outcomes

PAL



Key Feature

#5

Every school experience, a CCE lesson

CCE Lessons

[CCE (FTGP), CCE (MTL), PAL]

Lessons are planned and developed to ensure that learning is complementary and intentionally reinforced.

Resources to support schools

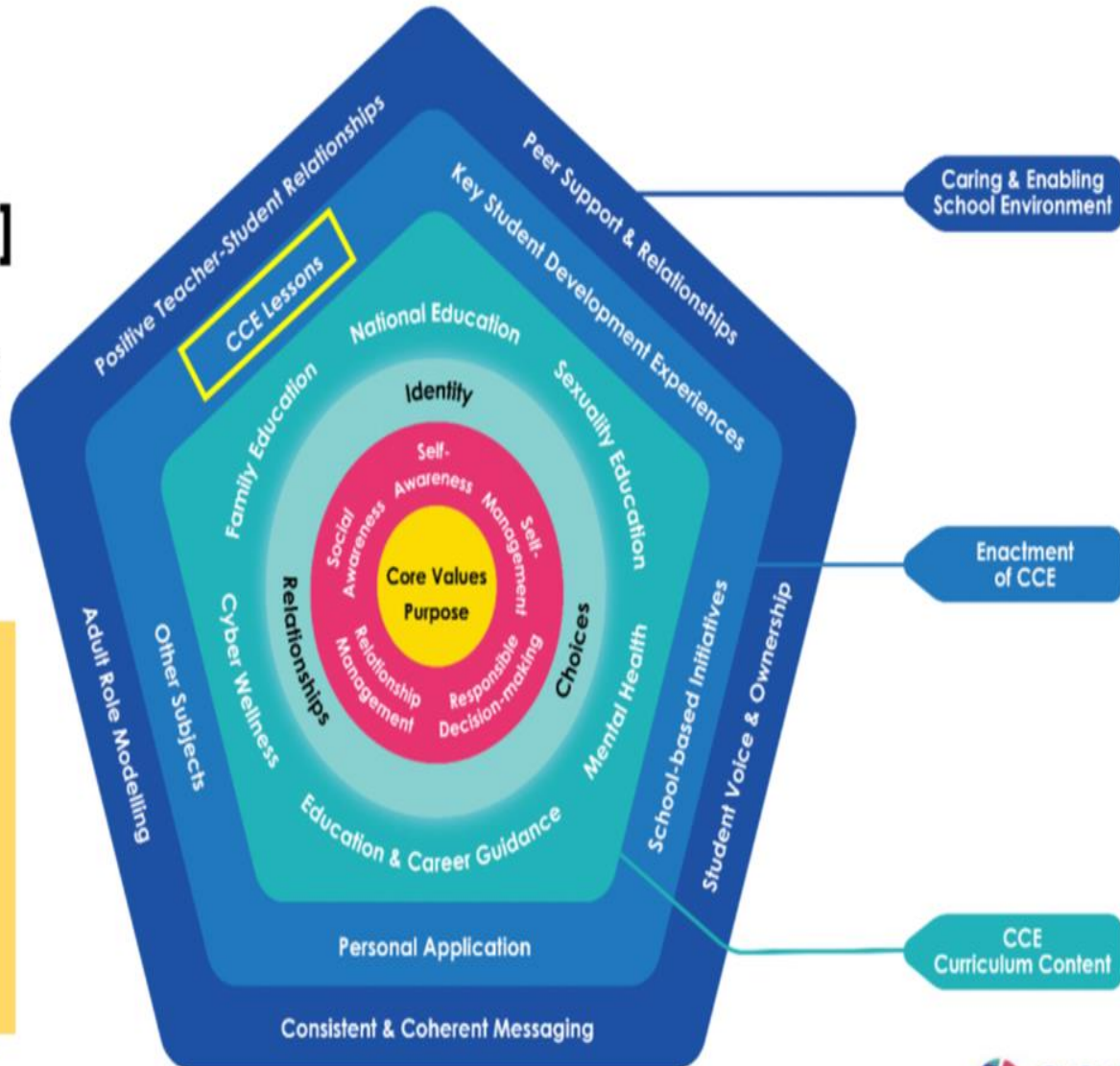
Lesson plans

Digital media resources

Student Journals

Contemporary content through

Kindsville Times/A-OK



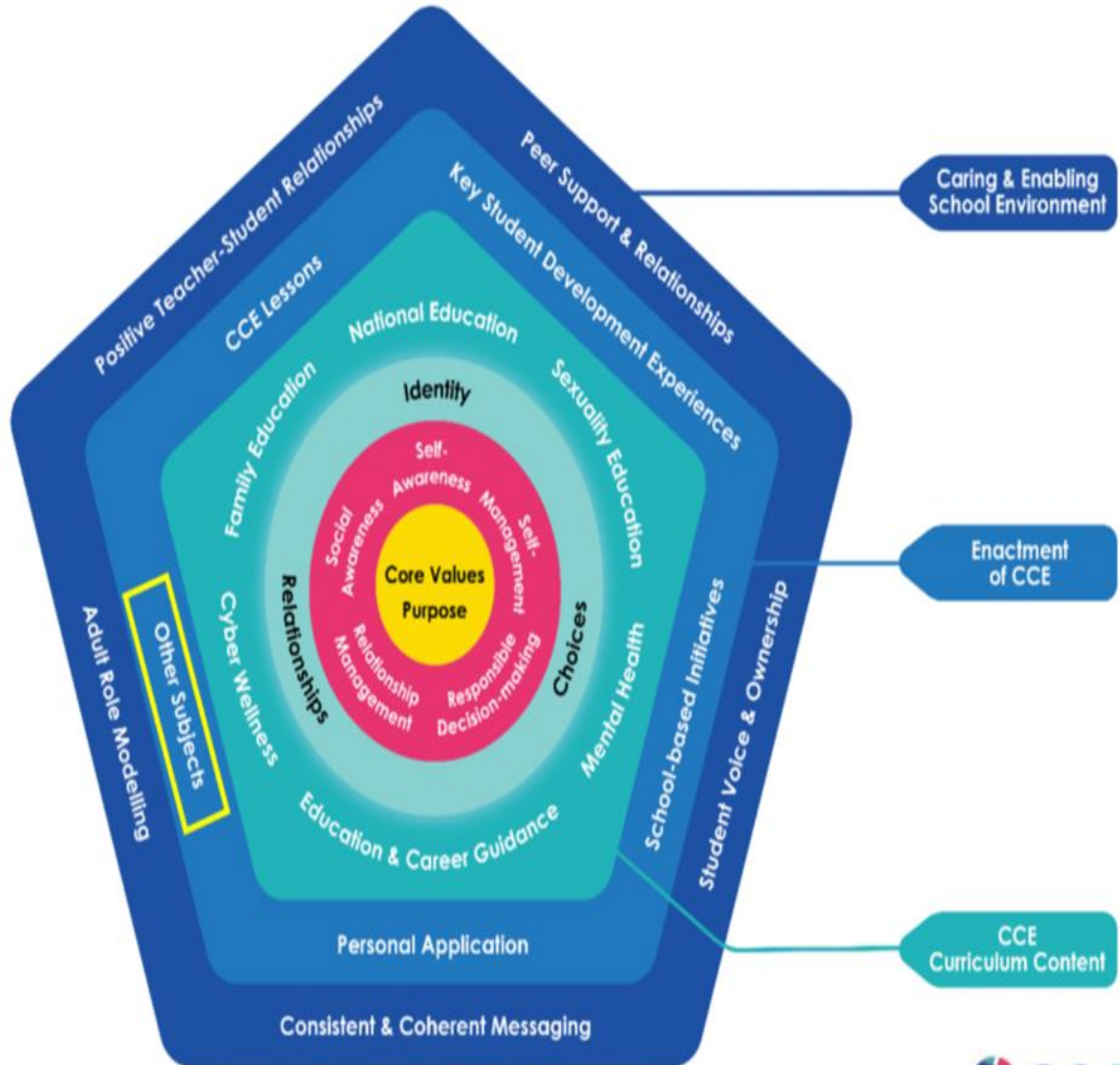
Every school experience, a CCE lesson

Social Studies (Primary)

Content across CCE and SS complement one another and reinforce students' learning.

Mother Tongue Language

Age-appropriate language use in alignment to the MTL curriculum.

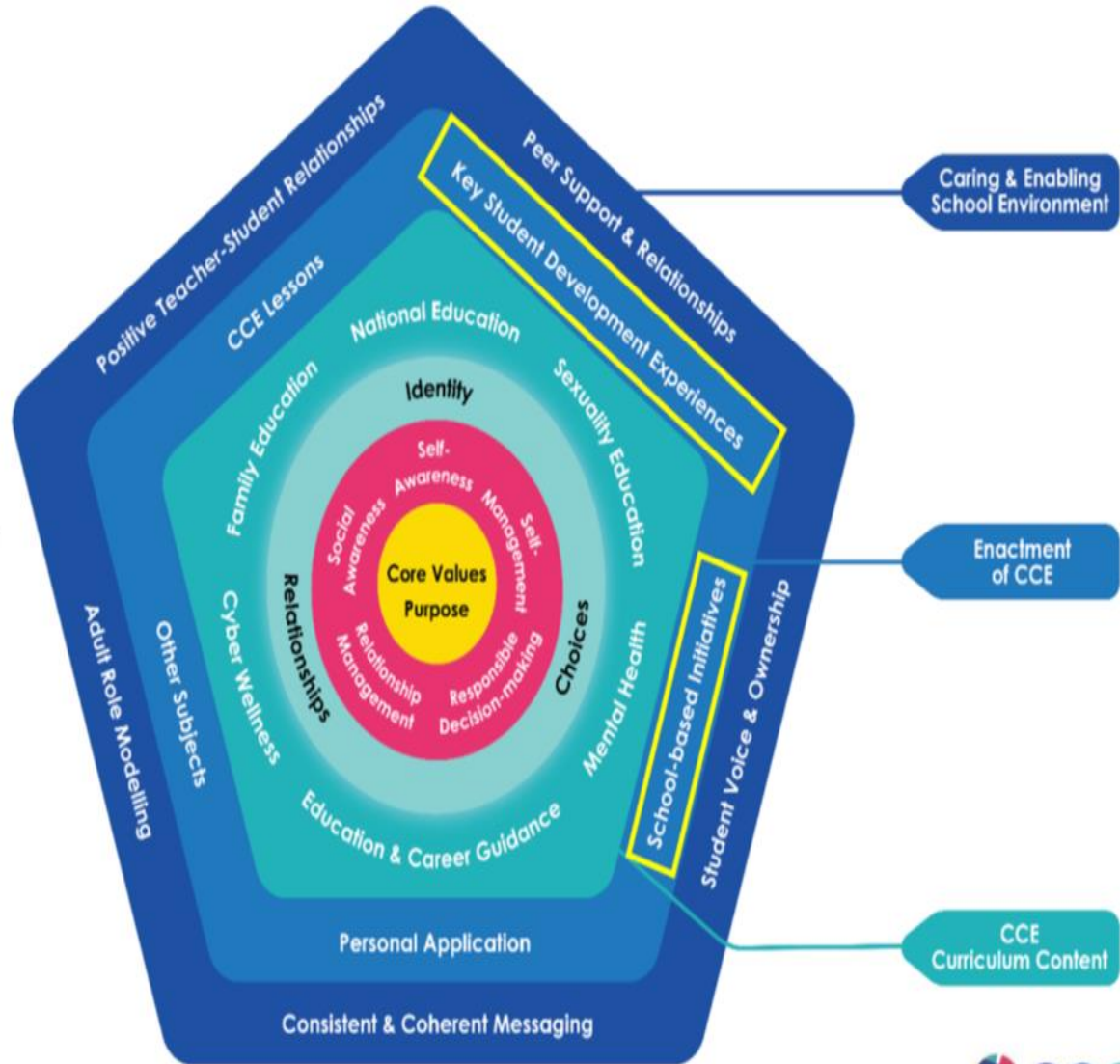


Every school experience, a CCE lesson

Key SDEs

- CCA
- Cohort Learning Journeys
- ECG Experiences
- NE Commemorative Days
- Outdoor Adventure Learning Cohort Camps
- Student Leadership Development Programmes
- VIA, including Everyday Responsibilities

School-based Initiatives



The HGS CCE Approach - 2E2R

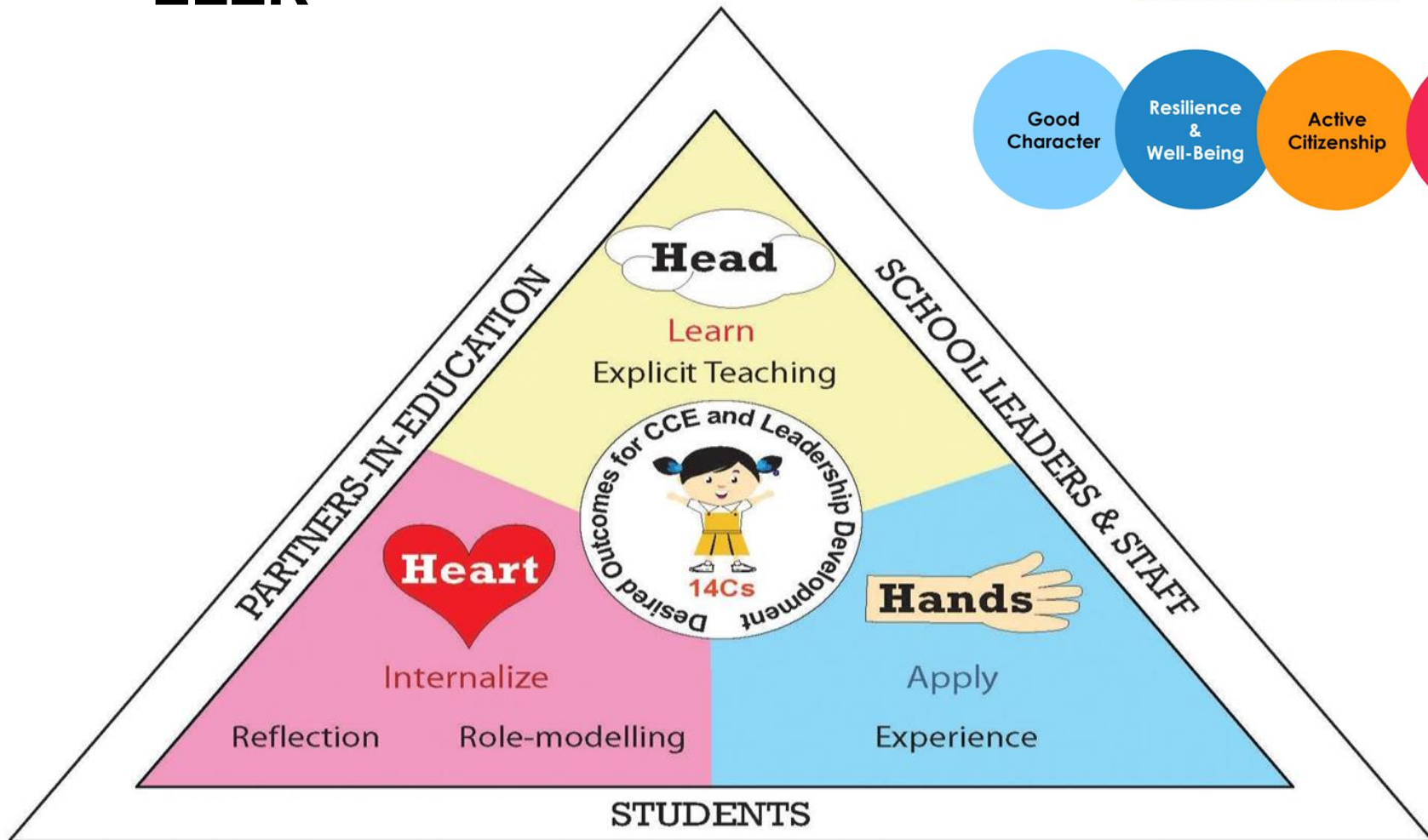
Goals of CCE 2021

Good
Character

Resilience
&
Well-Being

Active
Citizenship

Future-
Readiness



School-Based Initiatives



Kindness &
Gratitude

Boxes of
Blessings

Learning to
Learn

Environment

Ars Potens Est

Knowledge is Power in service to others, the school and the community.



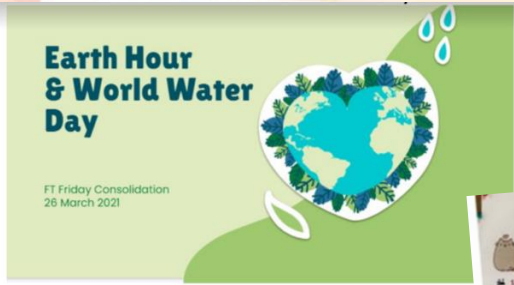
Financial
Assistance
Scheme

Integration
Programs

Education &
Career
Guidance

CCE Learning
Spaces





↑ Environment
Assembly talks, pledge card designs



↑ Bags of Blessings - Packing essential items into bags and writing gratitude cards to show appreciation towards construction workers



↑ Student led sharing sessions on Zero waste tips



↓ Students participate in the Clean Plate Campaign

← Exploring the CCE learning spaces in HGS

↓ International students at Tekka Food Centre



Walk for Rice →



Character and Citizenship Education

Learning to Learn

We believe that teaching students **how to learn** is as important as teaching them **what to learn**. In addition to mastering content knowledge, acquiring the right learning strategies and possessing a growth mindset are essential in promoting lifelong learning.

Term	Focus
1	Mindset Matters
2	Learning Strategies
3	Power of Mistakes
4	Resilience

Give a man a fish
and you feed him for a day;
teach a man how to fish
and you feed him for a lifetime.
Chinese Proverb

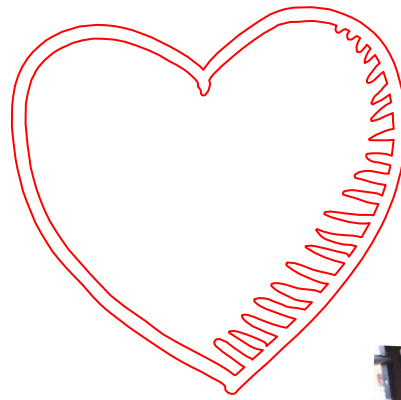


Character and Citizenship Education

KINDNESS & GRATITUDE PROGRAMME

The HGS Kindness and Gratitude Programme aims to cultivate the habit of being grateful, and to grow in kindness and be a blessing to others.

Students engage in various activities to sprinkle kindness among all.



Students complete kindness related mission cards from the Kindsville times while learning more about spreading kindness towards self and others.

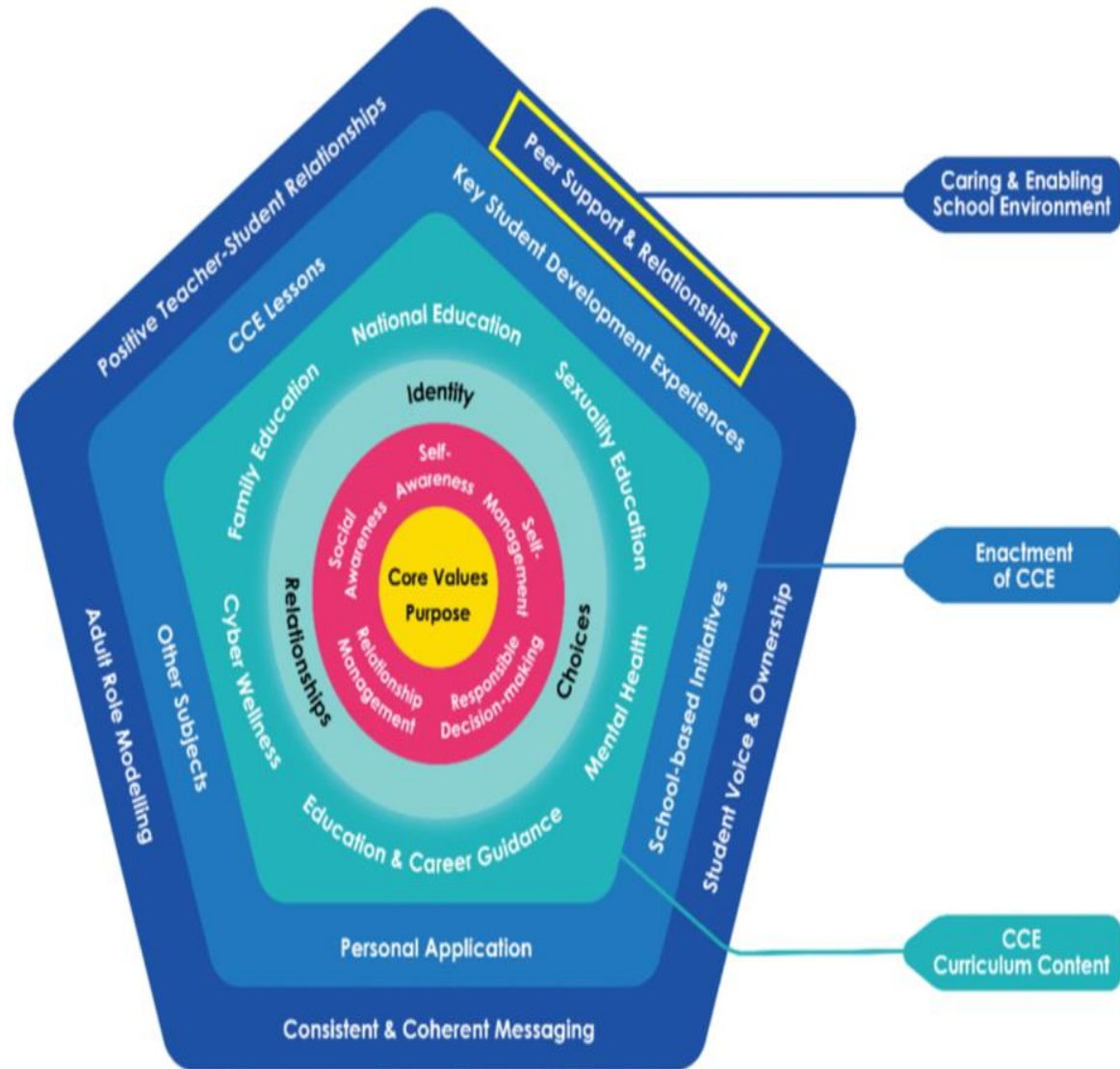


Our students learn all about the power of Kindness Rocks (designing, painting and gifting rocks to people who have made a difference in their lives).

Key Feature

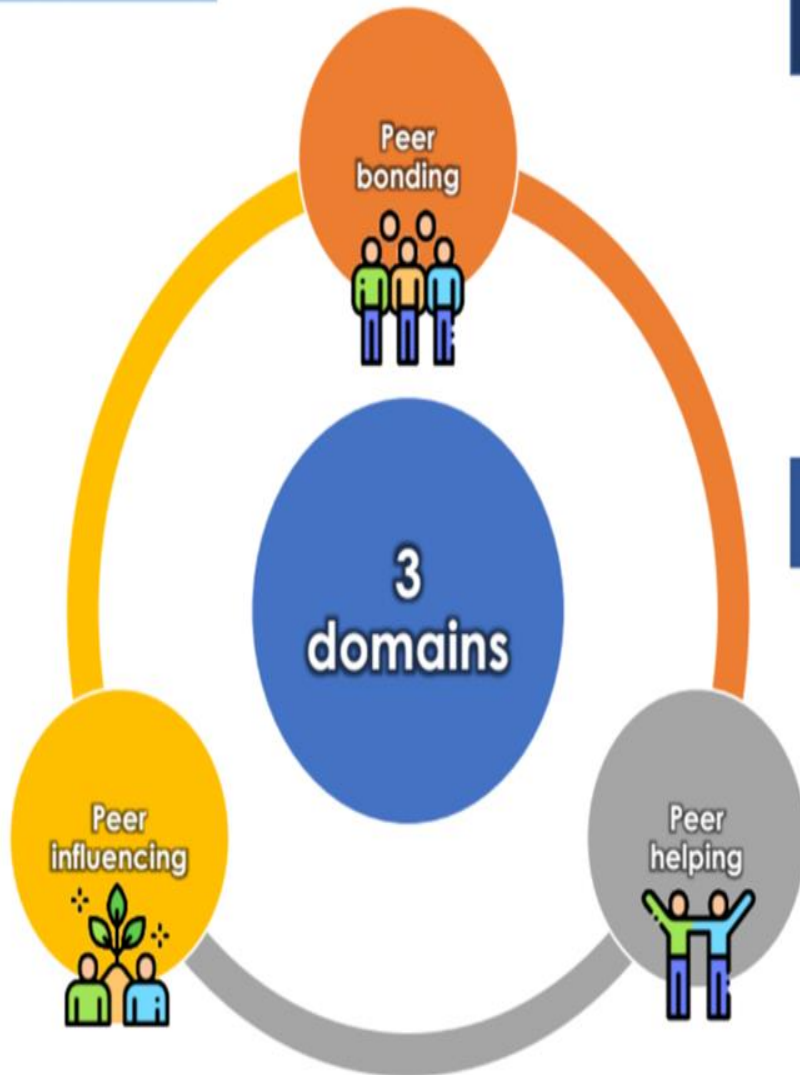
#5

Every school experience, a CCE lesson



Every school experience, a CCE lesson

About Peer Support and Relationships (PSR) ...



LEVEL 1 : Every Student a Peer Supporter



ALL students to show kindness, care and concern to their friends, offer them practical help and emotional support, and be a positive influence

LEVEL 2 : Peer Support Leaders (PSL)

Some students specially trained to be PSLs, to create a sense of belonging. They will look out for students in need (e.g. isolated, signs of distress, SEN, bullying, LTA), support them and refer them to trusted adults where necessary. PSLs are also positive influencers who promote positive mindsets, pro-social behaviours both online and offline, advocate for well-being, and role-model good character

Home School Partnership - Terminologies

- **I4Cs**

Integrity, Commitment, Concern, Cooperation, Creativity

- **Citizenship Dispositions (3S1W)**



A Sense of Belonging

To develop a deeper understanding of who we are as Singaporeans, and a shared understanding of the values that are important to us as a nation.

A Sense of Reality

To be aware of contemporary realities – including Singapore’s constraints and vulnerabilities – which affect us as a nation amidst the backdrop of a less predictable world.

A Sense of Hope

To have confidence and optimism in Singapore’s future and the resilience to face the challenges ahead.

(Culminating in) The Will to Act

To be active citizens who have a collective resolve and a sense of shared mission towards building a Singapore for all.



BETTER TOGETHER



HOME-SCHOOL PARTNERSHIP



Further questions?



Mdm Tng Shoo Ling (Year Head + Covering HOD CCE)

tng_shoo_ling@moe.edu.sg

Mrs Sunita Singh (SH Character Education)

sunita_singh@moe.edu.sg

Mrs Nikki Lin (SH Citizenship Education)

yeo_yu_nian_nikki@moe.edu.sg

Mdm Zareena Kamarraj (SH Student Management)

zareena_kamarraj@moe.edu.sg